

viðvera
 Contemporary Perspectives
 on
 Icelandic Landscape

April 13~16, 2015
 Monday to Thursday
 15:00~18:00

Tjarnarborg

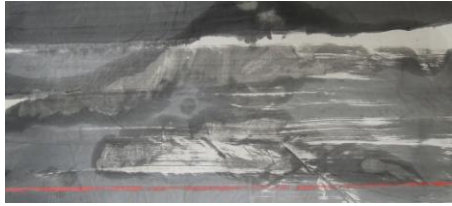
Organized by  Venue sponsor:
 Menningarhúsið
 Tjarnarborg
 í Fjallabyggð

viðvera is a group exhibition featuring seven international artists currently in-residence at Listhús Artspace. The work on display offers diverse perspectives on Icelandic landscape including painting, photography, drawing, sculpture, and installation.

The Icelandic proverb “glögg er gests augað” highlights that a visitor's view can have a freshness or clarity to it. In ***viðvera*** the group aims to make visible their presence within the landscape while also acknowledging the brief nature of their stay.

Participant artists:

Circle Mei-Ching Yang

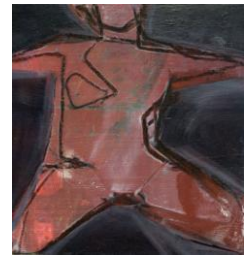


Circle Mei-Ching Yang is a Hong Kong artist, whose painting mainly depicts her interest in the transformative potential of colour. Her current series 'the Harmony' explores colour through observing everyday scenarios and how colour has potential to change meaning or mood, depending on its context, surroundings, or relationship with other colours.

Dervla O'Flaherty

dervlaoflaherty.com

Dervla O'Flaherty is an Irish artist who works primarily with paint and wood. Her recent work explores ideas of darkness, indeterminacy and the unconscious. In her painting, symbolic references and instinctual mark-making inhabit material places and imagined situations.



Ella West

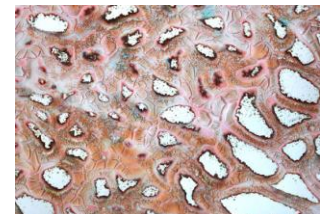
ellaelizabethwest.com

Ella West is a London based artist exploring the boundaries between printmaking, painting and site specific installation. Drawing connections between the surfaces of foreign planets and our own land here on Earth, her work looks to present an awareness of our environment balanced within a much larger order.

Haylee Ebersole

hayleeebersole.com

Haylee Ebersole is an artist currently residing in Pittsburgh, Pennsylvania. She creates sculptures, drawings, and prints that investigate the transformative potential of everyday materials. Through an alchemical approach, she courts interactions with materials such as gelatin, cool-aid, and other household substances in effort to produce objects that evade static form—that resist and push back.



Lorraine Heller-Nicholas

heller-nicholas.com

Lorraine Heller-Nicholas is an Australian artist who uses the landscape as a backdrop as a story takes the central focus. A half remembered relationship, once passionate, is here lost to its surroundings.

Shani Banerjee

shanibanerjee.com

Shani Banerjee is an American photographer, visual artist, and musician based in Pittsburgh, Pennsylvania. Banerjee pulls from ideas of duality of self, the grotesque, and ideas of memory as a suspension of death.



WU Shengzhi

wushengzhi.com

WU Shengzhi works mainly on paintings and installations. He was impressed by the contrast between the rapid transformation of Icelandic nature and the quiet or even frozen-like life of the local people.
